



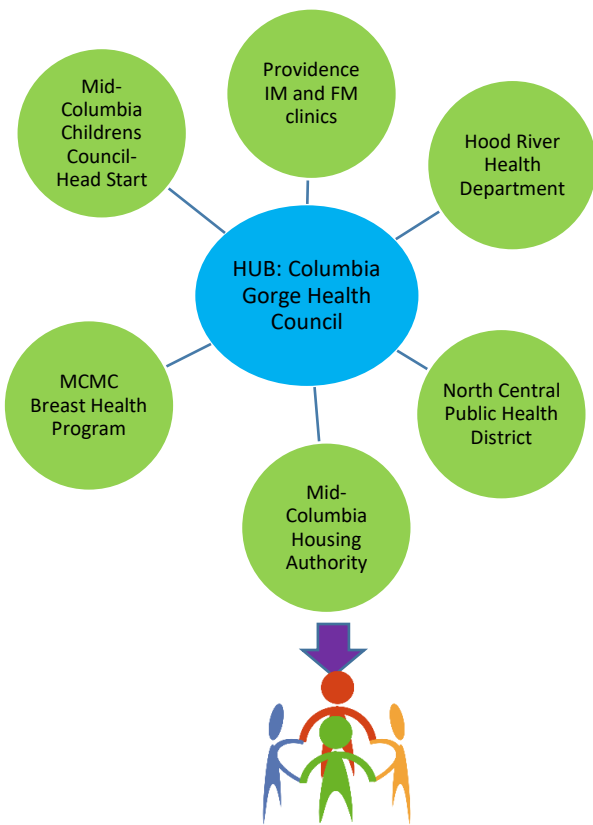
Bridges to Health Pathways



Pathways is centralized system that coordinates, tracks and measures both the process and the resources that allow for Community Care Coordination of those served.

Pathways ties payments to milestones that improve client's health and well-being.

- ✓ Current grant funding: Meyer Memorial Trust, Oregon Community Foundation, PacificSource Foundation, Providence CTC, Pacific Source CHE grant, Columbia Gorge CCO Shared Savings
- ✓ First Pathways initiative in nation to focus on social determinant topic (housing) rather than chronic condition
- ✓ Scope includes pathways designed to meet cross sector metrics
- ✓ "Housing Challenged" is the criteria to get enrolled (doubling up, transportation concerns, inadequate square footage, struggling to cover rent, at risk of losing home, unsafe housing situation, homeless, etc.)



Target Population:
**HOUSING
CHALLENGED**

Community Care Coordinators (CCC's) employed by Community Care Agencies (clinics, health departments, social service agencies) help coordinate needed services for clients & their households. Agencies contract with the HUB to get paid when evidence-based outcomes are met.

- CORE PATHWAYS (Needs)**
- Behavioral Health
 - Developmental Screening
 - Developmental Referral
 - Education
 - Family Planning
 - Food
 - Immunization
 - Pregnancy
 - Postpartum
 - Employment
 - Health Insurance
 - Housing
 - Medical Home
 - Medical Referral
 - Medication
 - Smoking Cessation
 - Social Service Referral (transportation, debt management, utility assistance, legal, documentation, etc.)

Benefits to the Community

- Minimize duplicate services and duplicate paperwork
- One access point for identifying client and household needs
- One primary Care Coordinator as a lead providing coordinated care
- Clients get treated equitably. One intake form ensures everyone is screened equally for needs.
- Payments are for measurable OUTCOMES
- Pathways set high standards of care for clients based on cross sector goals
- Work is measured in a standard manner across the community
- Data measured from outcomes get shared by the HUB to the community agencies
- Data helps to advocate for funding identified needs



Shared Technology:
CLARA VistaLogic

For more information or to make a referral contact:
Katy Williams at katy@gorgehealthcouncil.org 541-705-2705 Phone 541-397-0004 Fax